



NDA / Biomeridian Test

The **Biomeridian Test** is used to conduct a comprehensive evaluation of your energetic organ health. The theory behind the technology comes from both ancient Chinese Medicine as well as European medical research.

Chinese Medicine is based on the study of energetic channels that vitalize and travel throughout the body. Called meridians, these channels are associated with organs and body systems.

History

Research by German Physician Dr. Voll in the 1950's identified that meridian points had a lower electrical resistance or increased conductivity compared to other points not associated with meridian channels. His research led to a system of testing conductivity of specific meridian points (primarily on the fingers and toes) to assess whether the conductivity reading was within range or out of range. Through such assessment it is possible to evaluate the energy of meridians and thereby assess the energetic health of organs and body systems.

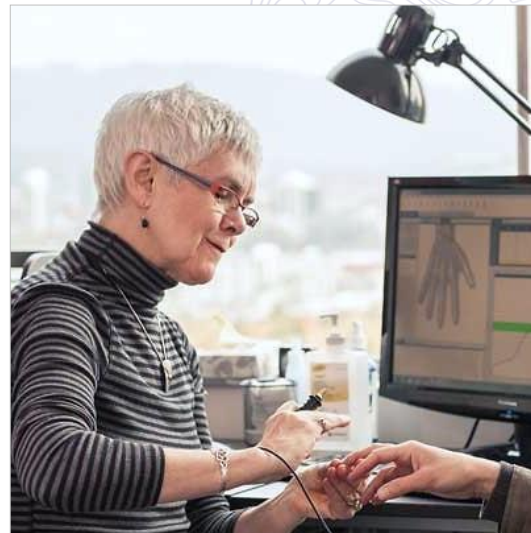
Integrative Approach to Biomeridian Testing

Integrative Naturopathic Medical Centre uses a system for meridian testing that was developed in the US and is FDA approved.

This system is called the **BioScan: Meridian Stress Assessment System** ⁽¹⁾, it is a computerized program for testing and recording meridian data.

What to Expect

- This test is non-invasive
- Duration of this test is 60 minutes and is usually paired with your Initial Naturopathic Consultation.
- The types of tests will be determined by your Naturopathic Doctor.
- One of our Naturopathic Doctor Assistants will conduct the test and will be using specific points (meridians) on your hands and feet.
- Results will be reviewed at a follow-up with your Naturopathic Doctor
- If a Biomeridian Food Sensitivity Test is conducted, you may be recommended to see our **Registered Holistic Nutritionist**, Rhiannon Lytle, for further support.



Preparing For Your Test

- Avoid wearing lotion or cream on the hands and feet
- Drink lots of water

Types of Tests

During the 1-hour Assessment, your Naturopathic Doctor may suggest any of the following tests:

- Vitals
- Biomeridian Organ Scan
- Biomeridian Food Sensitivity Test
- Biomeridian Cellular Screen
- Body Composition
- Nerve Express Test
- Liquid Mineral Test
- Physical Assessment

NOTES
